



2N[®] NetSpeaker

IP Audio System



Presentation Case – Quick Start

Version	1.0.0
Firmware	1.0.0

www.2n.cz

2N TELEKOMUNIKACE a.s. is the Czech manufacturer and supplier of the telecommunication devices



Our products are, GSM Gateways, PBX systems and Communicators. 2N TELEKOMUNIKACE a.s. is a part of 100 Top Czech companies for many years and it represents the symbol of stability and prosperity in the telecommunication market for more than two decades. In these days company is exporting the goods to more over 120 countries and it has the exclusive partners in each continent.



2N® je registered mark of 2N TELEKOMUNIKACE a.s. The product names and the other products mentioned in this document are also registered trademarks and/or products protected by certain law.



Declaration of conformity

2N TELEKOMUNIKACE a.s. declares 2N® NetSpeaker is passing the basic requirements and the other particular paragraphs of the directive 1999/5/ES. The full text of the directive is added to the product CD or on www.2n.cz



2N TELEKOMUNIKACE a.s. is the holder of the certificate ISO 9001:2000. All development, manufacturing and distribution processes are in correspondency with this norma and ensures the high quality, technical level and professionalism of all our products.

Contents

1.	Presentation case overview	5
1.1	Turning the system ON	6
1.2	Connecting 2N [®] NetSpeaker	10
1.3	Creating the Session	14
1.4	Make a broadcast	18
1.5	Changes in the documentation	20
1.6	Troubleshooting	21
1.7	List of Abbreviations	22

1

Presentation case overview

In this document, we introduce the **2N® NetSpeaker** product in the Presentation case and how to use it. The device is connected to the speaker already and the system is ready to Plug and Play. The section also includes safety precautions.

Here is what you can find in this section:

- Turning the system ON
- Connecting Net Speaker
- Creating a session
- Make a broadcast

1.1 Turning the system ON

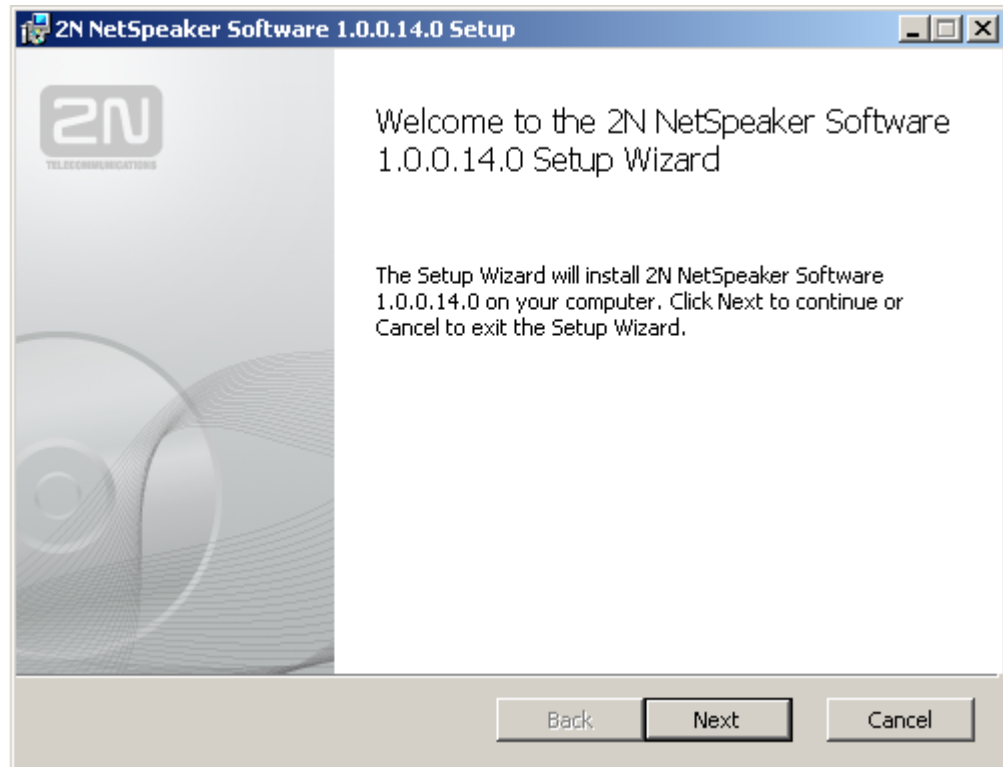
In this section we provide you with the steps how to turn ON the system installed in the presentation case. Please follow the steps below.

1. After opening the case, you will find 2N®Net Speaker device in the middle of the field. On the left side you can see the speaker build in the case. On the upper right side you can locate the PoE injector to provide the power supply for NetSpeaker over Ethernet. In the lower right side there is a space to pack the connecting cables (230V AC power supply, CAT5 RJ 45 Ethernet cable). See picture 1.1.

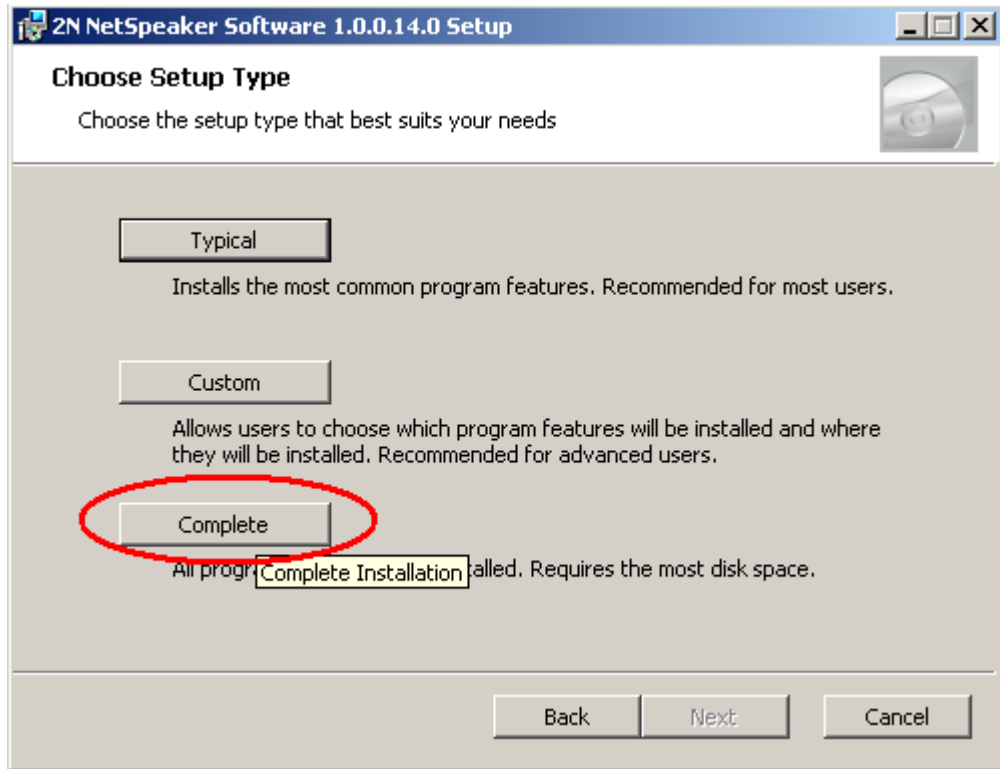


2. Pull out the connecting cables and connect the power supply cable to the power outlet.
 - a. Net Speaker unit turns ON, you can see blue/green light is shining in the front panel of Net Speaker.
 - b. The default settings of the unit are:
 - i. STATIC IP settings: IP – 192.168.1.100
MASK: 255.255.255.

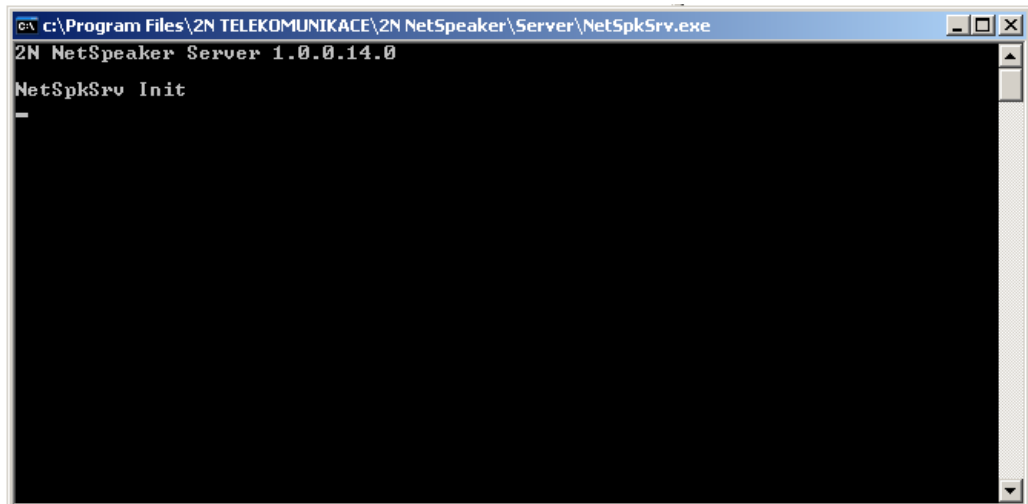
- ii. Active mode is OFF – NetSpeaker waits for the Server requests
 - iii. Login for Server: Admin/2n
 - c. To connect to the NetSpeaker via Ethernet, set up the Static IP address on your Computer to:
 - i. IP – 192.168.1.x (x≠100, 0, 255)
 - ii. MASK – 255.255.255.0
 - iii. You can check the interconnection by the PING command
- 3. Insert the USB Flash disk to your computer and run /Netspeaker/setup.exe



- a. Confirm the license agreement
- b. Choose Complete installation type (install Server, Control Panel and Console) to c:\Program Files\2N TELEKOMUNIKACE\2N NetSpeaker\



- c. Follow the steps of the wizard to finish the installation.
4. Run Server application (you can install it also as a service and run it automatically) from c:\Program Files\2N TELEKOMUNIKACE\2N NetSpeaker\Server\



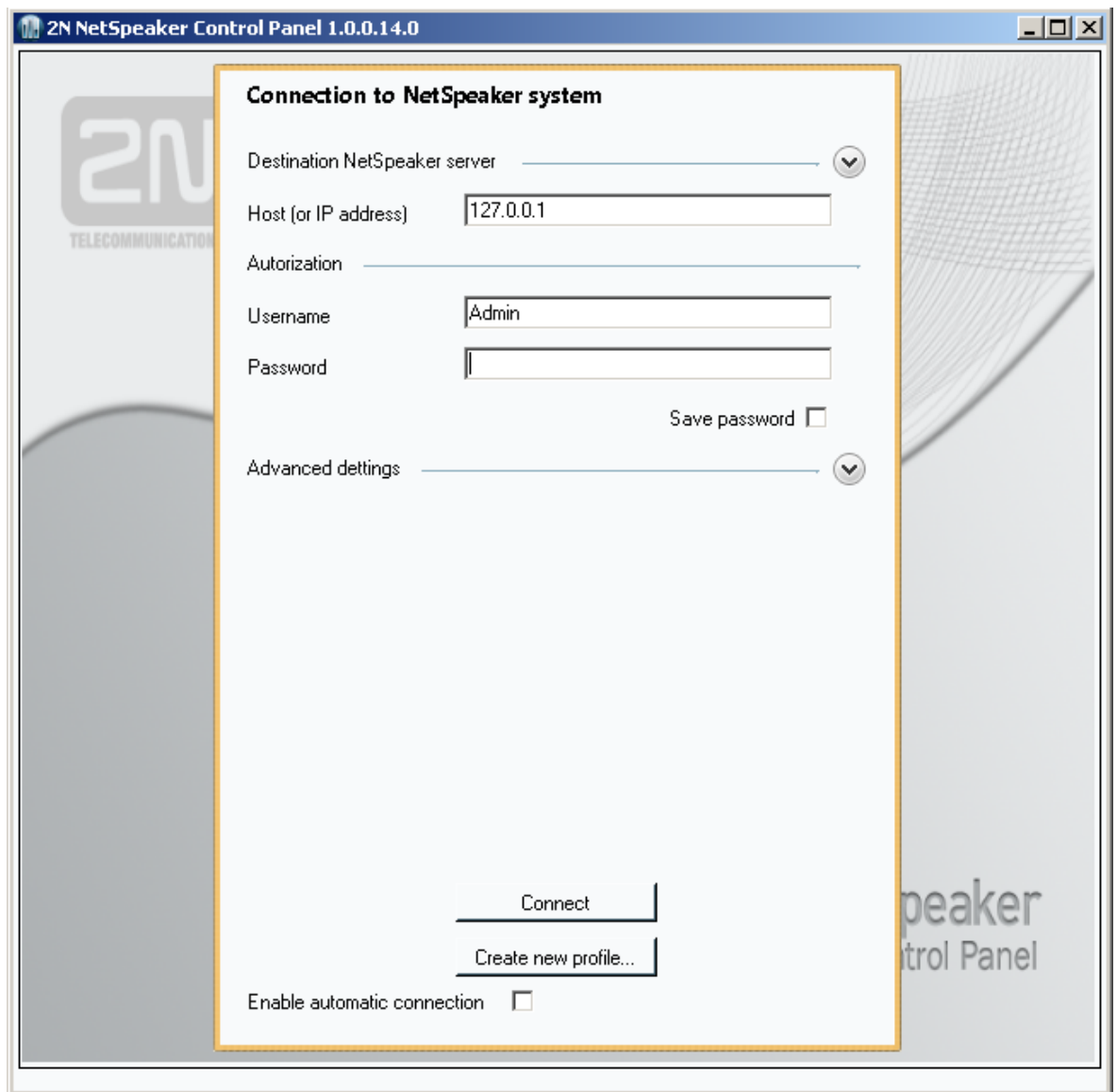
1.2 Connecting 2N[®] NetSpeaker

In this section, we provide you with the steps how to configure NetSpeaker device in the server database and connect it to the system. Please follow the steps bellow.

1. Run Control Panel application from c:\Program Files\2N TELEKOMUNIKACE\2N NetSpeaker\Panel\



2. Login Windows opens. Type Password „2n“ and click on Connect





3. Click on the Speakers icon in the left menu

- a. Click on New connection (you can rename the connection by clicking on it with the right mouse button). Your new connection line appears in the lower middle window Connection.

- b. In the right Windows Connection settings please change the IP address to 192.168.1.100, no other changes are necessary

Connection settings	
Name	New connection (1)
Connection	
Connection timeout (ms)	<input type="text" value="10000"/>
IP address	<input type="text" value="192.168.1.100"/>
IP port	<input type="text" value="6998"/>
Change password	
Firmware	
<input checked="" type="checkbox"/>	Automatic firmware upgrade

4. Click on Save configuration icon in the upper menu bar to save the changes.  Save configuration
5. After few seconds, you can see detected NetSpeaker in the upper middle Windows Speakers

Speakers
 52-0304-0013


6. Click on the symbol of the Speaker and click on „Add detected to the database“

- a. Grey symbol with + sign represents detected but not used speaker



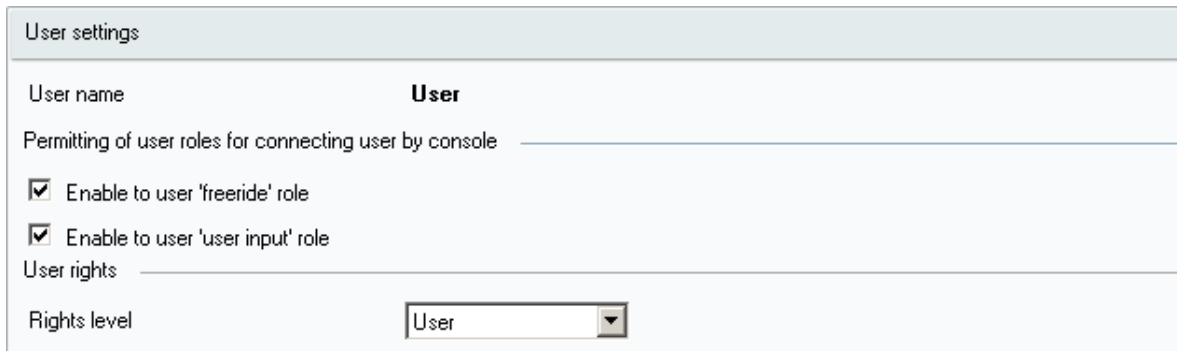
New speaker

(1)

- b. By adding the symbol changes to , save the changes
- c. NetSpeaker LED shines in blue continuously, the unit is connected to the server

1.3 Creating the Session

1. Click on User icon in the left menu
 - a. In the middle window, the root group "Untitled" is created
 - b. The user Untitled is created in this group
 - c. Rename the it to User by clicking on it with the right mouse button
 - d. In User setting enable "Freeride role" and "User Input" (Input User will be created automatically in menu Sources, see bellow.)



User settings

User name **User**

Permitting of user roles for connecting user by console _____

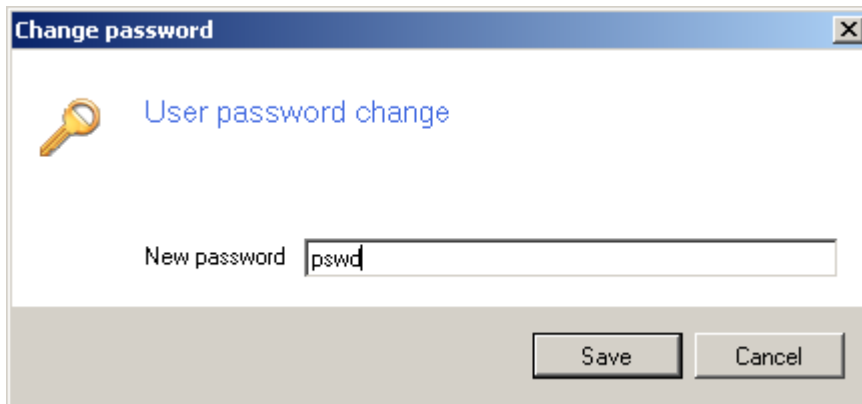
Enable to user 'freeride' role

Enable to user 'user input' role


User rights _____

Rights level

- e. Click to Change Password to set the password for the user (it is necessary for connecting NetSpeaker Console) Set "pswd"

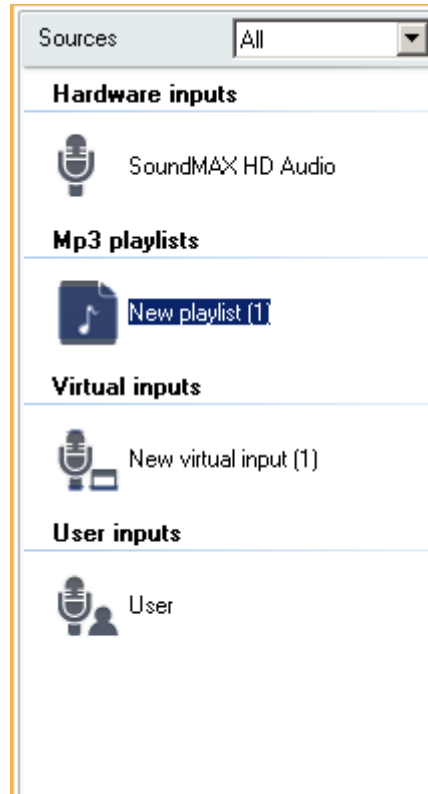


Change password

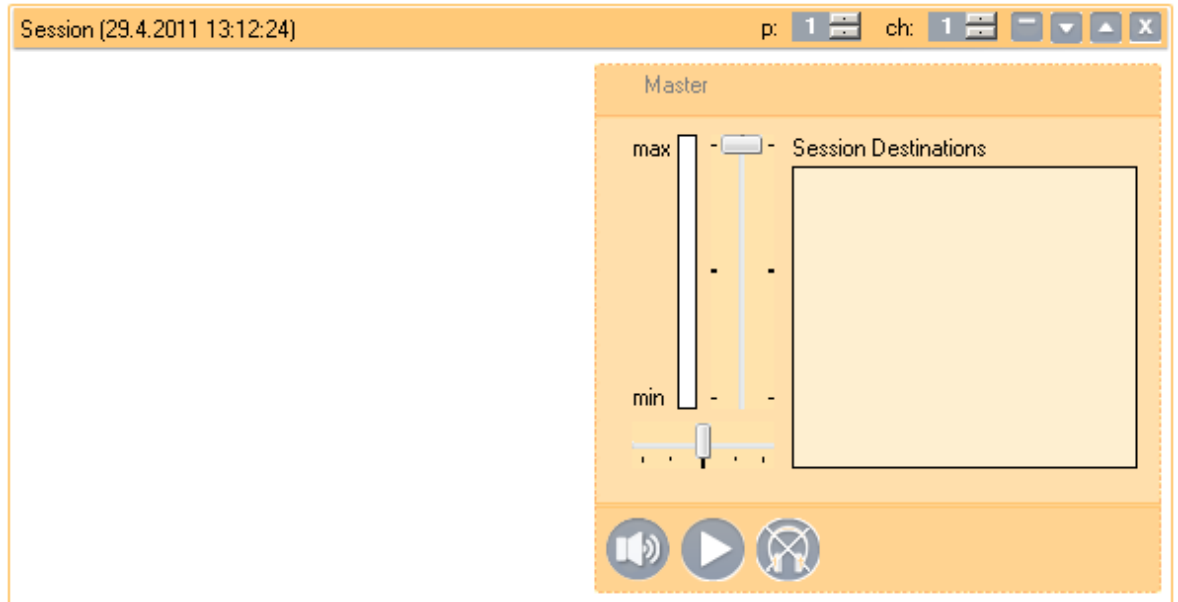
 User password change

New password

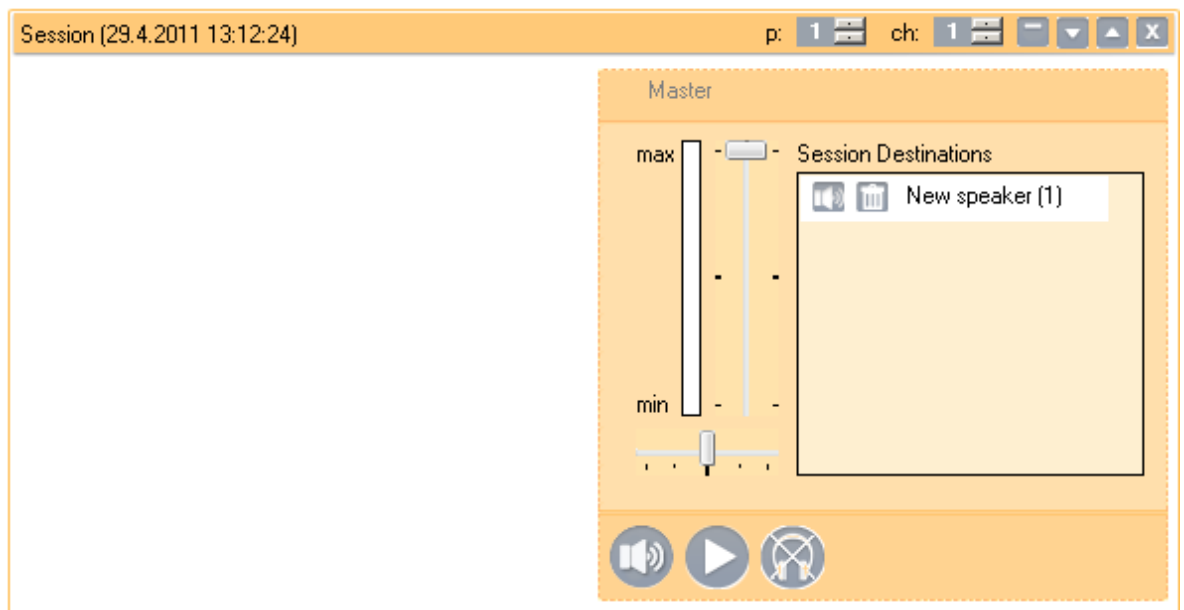
2. Click on Source Icon in the left menu. Here you are defining all the sources of the audio broadcast. You can see your computer sound card detected as the source and User input, created previously by creating users.
 - a. Click on Create a playlist to create playlist for mp3 files
 - b. Click on Create virtual input, to create free input for any user



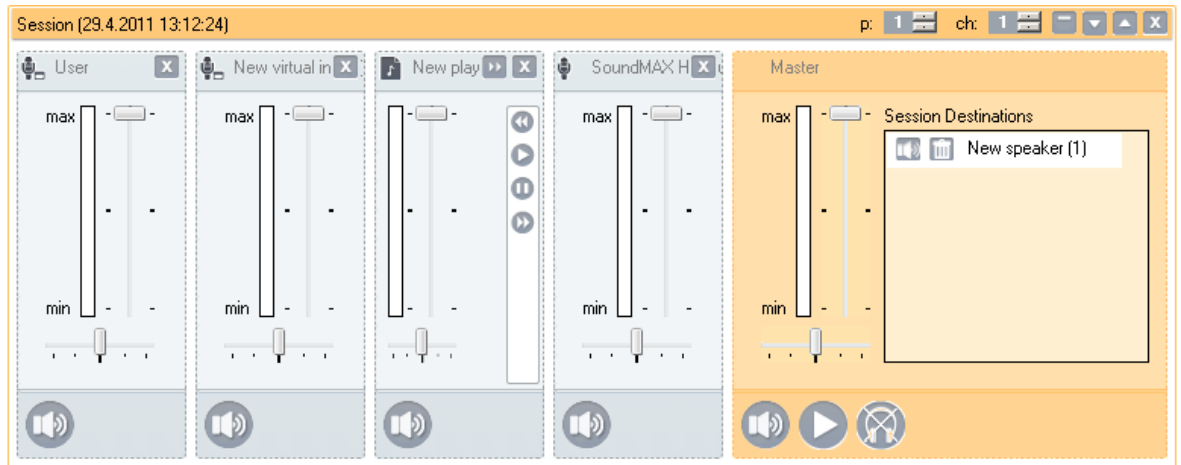
3. Click on Sessions in the left menu. System asks you to save the changes. Click on Create a session. Session defines a relationship between sources and destinations (speakers). The default tray is created in the middle window. In the right side you can see all defined sources. In the right side, you can see all connected Speakers.



- a. Using Drag & Drop assign the destination to the session. Simple move the highlighted speaker over the Master fader of the particular session.



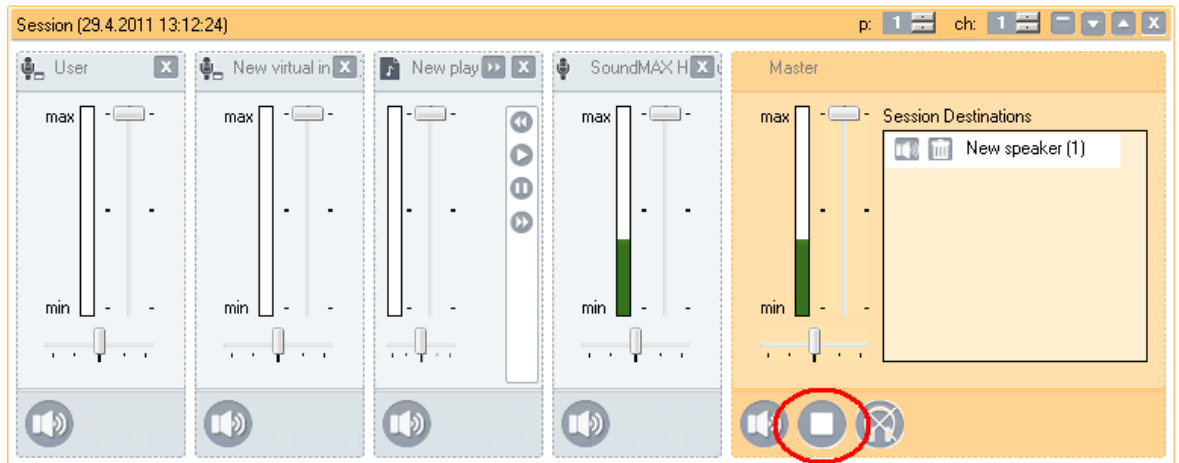
b. The same way as the destinations add the sources to the session.



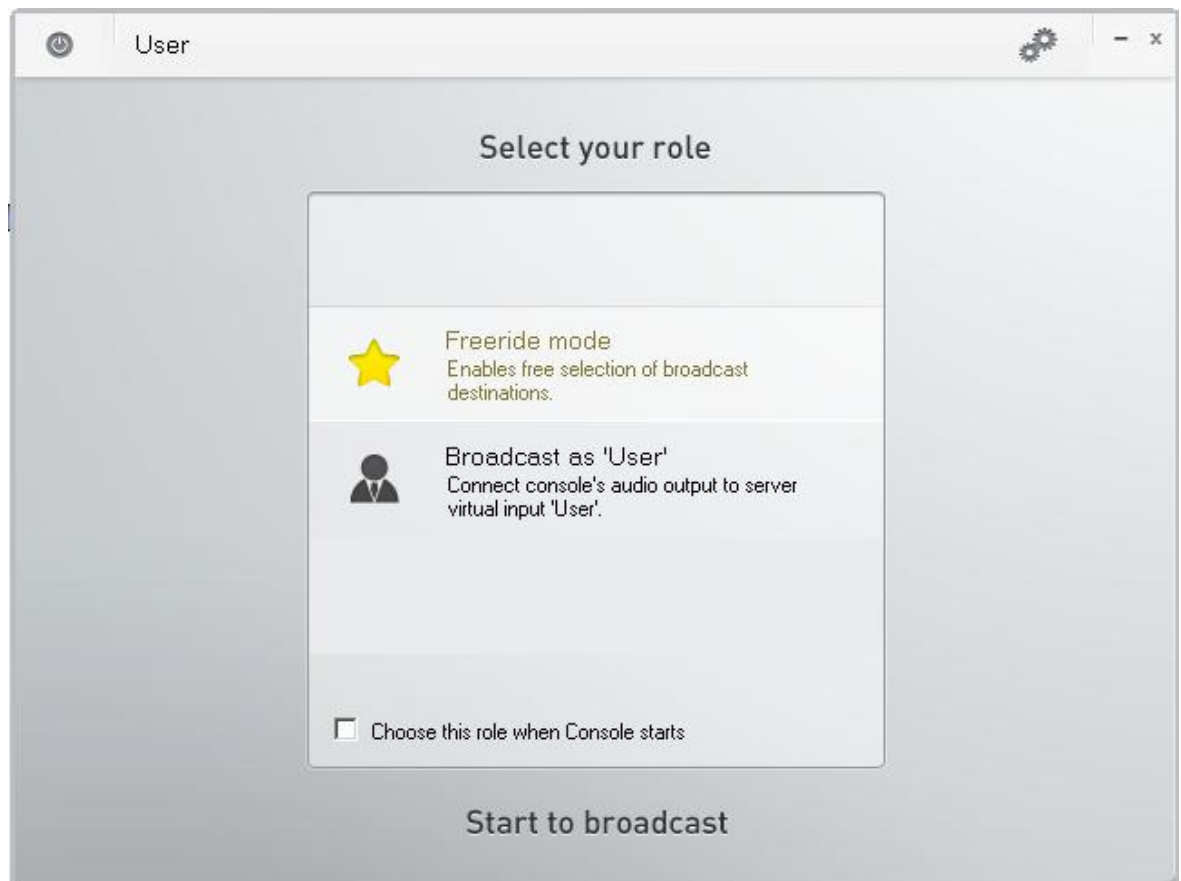
c. The session is created, the system is ready to process the broadcast.

1.4 Make a broadcast

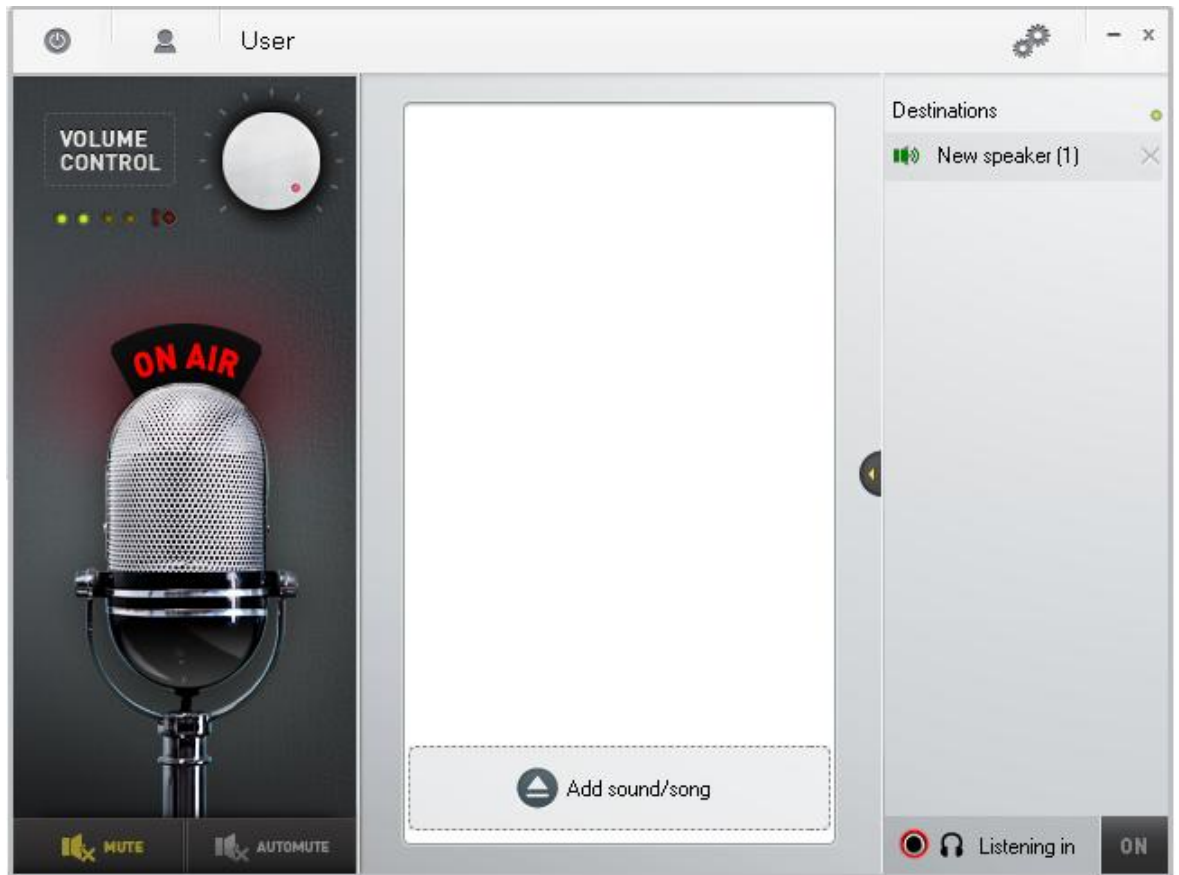
1. To start the broadcast, you can use Control Panel to play the playlist files, or mix different sources together dynamically. To start broadcasting just click on Play icon in the Master under session master fader



2. To make just simple announcement, run the Console application.
 - a. For login enter username "User" and password "pswd"
 - b. You can choose Free ride role or broadcast as "User", choose the User role



3. The application enables you to use the microphone connected to the computer to make an announcement. Click on MUTE icon to start broadcast. In the left field, you can see the destination (speaker) where the broadcast is directed to.



1.5 Changes in the documentation

Manual Version	Changes in Documentation
1.0.0	<ul style="list-style-type: none">■ The User Manual corresponds to 2N[®] NetSpeaker FW version 1.0.0.



Caution

- The manufacturer keeps improving the firmware according to the clients' requirements. Refer to the 2N web sites www.2n.cz for the current 2N[®] NetSpeaker firmware and User Manual versions.

1.6 Troubleshooting

In case of any failure, please contact support@2n.cz

1.7 List of Abbreviations

- **FW** (Firmware)
Software responsible for system function.
- **HW** (Hardware)
For this purpose, hardware means an electronic device, circuit, board, component, etc..
- **LAN** (Local Area Network)
- **PC** (Personal Computer)
IBM PC compatible personal computer.
- **SW** (Software)



2N TELEKOMUNIKACE a.s.

Modřanská 621, 143 01 Prague 4, Czech Republic
Tel.: +420 261 301 500, Fax: +420 261 301 599
E-mail: sales@2n.cz
Web: www.2n.cz